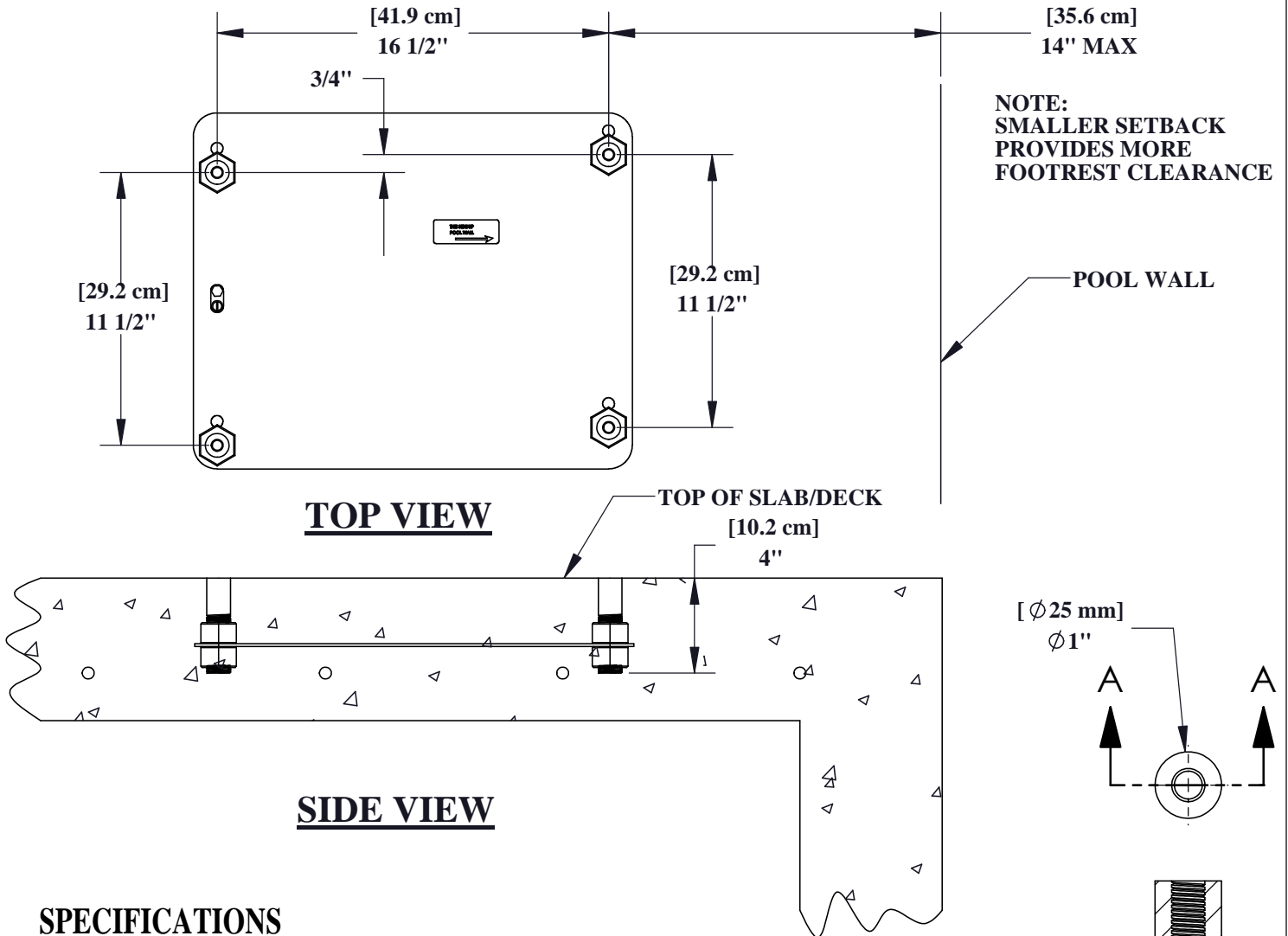


PRO POOL & RANGER LIFT ANCHOR



SPECIFICATIONS

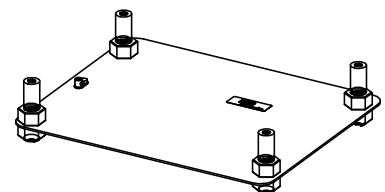
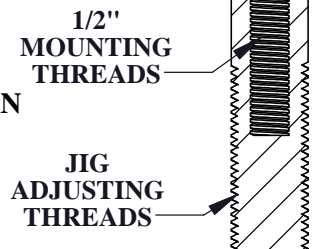
THE AQUA CREEK PRO POOL/RANGER ANCHOR ASSEMBLY SHALL CONSIST OF FOUR (4) 1" [25 mm] ANCHOR SOCKETS MOUNTED IN A 3/16" [5mm] JIG PLATE. THE ANCHOR SOCKETS SHALL BE ADJUSTABLE WITHIN THE JIG PLATE. THE ANCHOR SOCKETS SHALL BE REMOVABLE FOR RETRO-FIT PLACEMENT IN AN EXISTING POOL OR SPA DECK.

MANUFACTURER RECOMMENDS THAT THE ANCHOR ASSEMBLY BE GROUNDED PER LOCAL CODES.

ANCHOR SOCKET: ϕ 1" [ϕ 25 mm] TYPE 304 STAINLESS STEEL

ADJUSTING NUT: 1"-8 HEX NUT - TYPE 304 STAINLESS STEEL

JIG PLATE: 3/16" [4.8 mm] CARBON STEEL PLATE



9889 GARRYMORE LANE
 MISSOULA, MT 59808
 (406) 549-0769
 FAX (406) 549-2602

NOTE:
 *SPECIFICATIONS ARE SUBJECT TO CHANGE WITHOUT NOTICE
 *ALL DIMENSIONS ARE IN INCHES

Aqua Creek Products
 The Total Solution for Pool and Spa Access

PRODUCT:	F-433PP4A		
DWG #:	F-433PP4A-1		
SCALE:	1:6	DATE:	11/24/10
DRAWN BY:	DS	REVISION:	G